



Exterior Side & Rear View Cameras
 IP67 rated with 360 degree camera rotation for Side View or horizontal applications

American Bus Video

2545 Valley Ridge Drive
 Cumming, GA 30040
 (770) 263-8118 (770) 887-5944 Fax
<http://www.AmericanBusVideo.com>
sales@AmericanBusVideo.com

25 years Mobile Digital Sales & Service Experience

100% Solid State
 D1 High Resolution
 Driver Event Marker
 Built in G-Sensor

SD4mX Driver Risk Driver Safety Series Low Cost Vehicle Surveillance

Active Driver Alerts
 GPS Speed & Mapping
 10-Year Warranty Available
 Dangerous Driver Charting



Choice of Cameras



Choice of Cameras



The SD4mX mobile vehicle DVR has no moving parts in the recording mechanism, making it 100% Solid State Digital. SD4mX DVR is incredibly small, can be mounted in very remote locations throughout a vehicle. The Driver Event Marker / DVR Status Indicator permits driver "marked" events to be quickly reviewed. This system offers unrivaled playback flexibility for Windows or Mac operating systems, as files are "AVI" format.

Leading Features Built Into SD4mX Fleet Driver Safety Series Event Recorder w/Driver Alerts

- 128 GB 100% Solid State Digital memory capacity, Mobile DVR for rugged reliable data memory storage
- 4-channel DVR can accept up to 4 cameras with 4 channels of audio (School Buses are noisy)
- Built in Accelerometer & G-Sensor Charting documents Dangerous Driving Behaviors
- Active Driver Safety Alerts when they exceed safe driving thresholds
- Mosaic "Blurring" software to protect children identities during playback
- GPS School Bus Speed & On Screen Mapping available on "SD4mXG" model
- GPS Time Synchronization & automatic Daylight Savings Time (DST) available on "SD4mXG" model
- USB 2.0 Port & Ethernet: 10/100M Base-T, RJ45 LAN port on face of DVR
- AVI Video Files viewable on 3rd Party Players; VLC, MPlayerX & Windows Media Player w/codec plug-in
- Selectable Motion Detection permits conservation of memory if no vehicle activity sensed
- Apple Mac OSX or Windows PC AVI video file playback on AVPlayer or 3rd party Legacy players w/codec plug-in
- Driver Event Marker Button with Pre & Post Event video capture (saves time when searching for incidents)
- Remote DVR Status Indicator so driver can verify function when DVR mounted in hidden location
- Play the recorded AVI files back using the unit connected to TV, or SD card in PC w/codec plug-in
- D1 high resolution & H.264 compression for images 4 times clearer than CIF technology
- Locking Integral Security case (included) provides security for video evidence
- 10-Year Extended Warranty available on this 100% Solid State DVR
- Loyalty Reward DVR Upgrade Eligibility, Future DVR Upgrade for less than 1/2 cost of new DVR

<http://www.AmericanBusVideo.com> 770-263-8118 sales@AmericanBusVideo.com

SD4mX incorporates Built in 3-Axis Accelerometer & G-Force Sensor

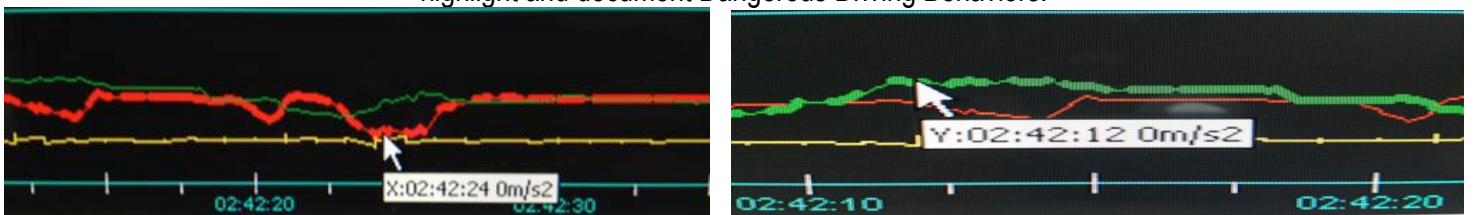
The screenshot displays the SD4mX software interface. On the left, there are four video camera feeds showing the interior of a bus from different angles. On the right, there is a table of video files with the following data:

Unit ID	Channel	Start Time	Stop Time	Size
1	1	14:29:50	14:34:00	4.8 M
1	1	14:34:00	14:39:00	5.0 M
1	1	14:39:00	14:41:33	3.0 M
1	1	14:46:39	14:47:21	0.8 M
1	1	14:48:15	14:49:20	1.3 M
1	1	14:50:31	14:51:25	1.0 M
2	2	14:29:51	14:34:00	4.9 M
2	2	14:34:00	14:39:00	5.0 M
2	2	14:39:00	14:41:34	3.0 M
2	2	14:46:39	14:47:21	0.8 M
2	2	14:48:16	14:49:21	1.3 M
2	2	14:50:31	14:51:25	1.1 M
3	3	14:29:51	14:34:00	4.9 M
3	3	14:34:00	14:39:00	5.0 M
3	3	14:39:00	14:41:35	3.0 M
3	3	14:46:39	14:47:21	0.8 M

Below the table, there are search filters for location (H:\), date (2010-08-30), and video type (All Video). A search bar shows results for 2012-11-15 at 18:38:08. The interface also includes playback controls and options for Speed Diagram, Download Info, and Time Diagram.

Low Resolution images used for keeping PDF size small for e-mails, actual images high resolution D1 quality

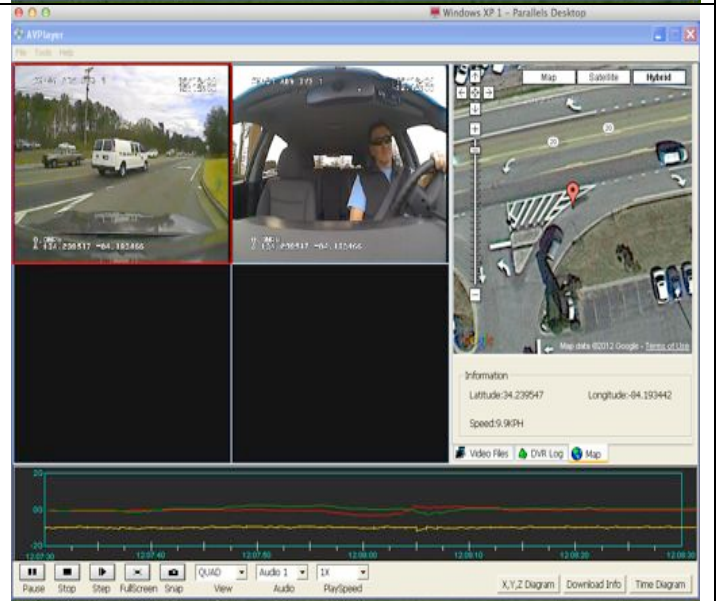
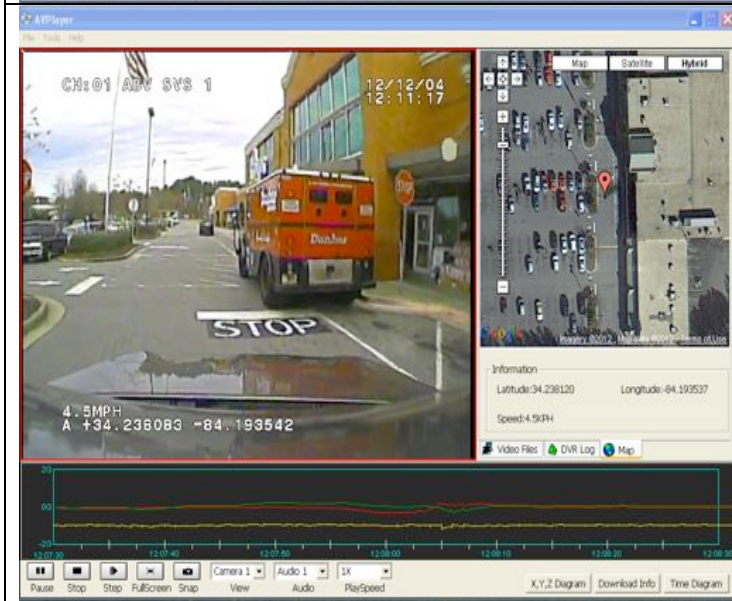
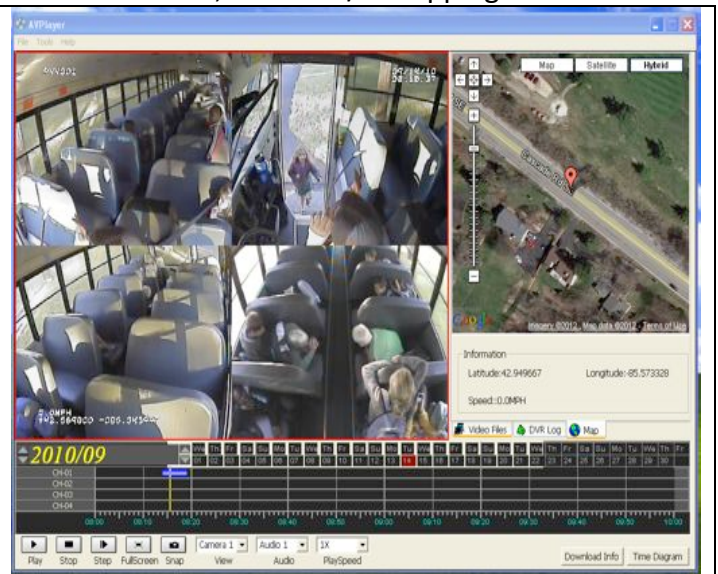
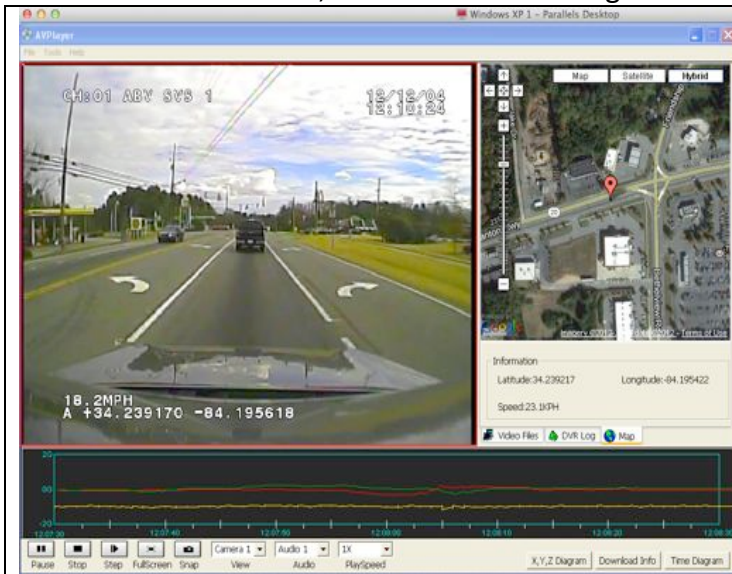
The "SD4mX" provides sequential impartial documentation of potential dangerous driving behaviors that can adversely affect your fleet equipment investment or drivers safety and help provide a driver risk management safety tool that can be used to highlight and document Dangerous Driving Behaviors.



The SD4mX "3-Axis G-Sensor" Documents Dangerous Driving Behaviors:

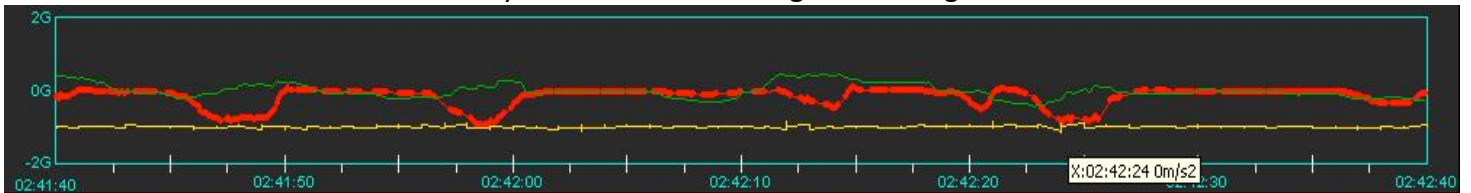
- Hard Braking recorded, distracted drivers potentially violate Federal DOT Safe Driving Mandate, (Documented on inertia charting & audio alerts driver to enhance driver safety and remind driver not to follow closely)
- Dangerous Hi-Speed Turns increase driver safety risks, increase liability, and risk company assets, by greatly increasing the risk of accidents. (Documented & audio alerts driver to enhance driver safety and remind driver not to take turns too fast)
- Crash & Impacts recorded for review in case of liability lawsuit whether driver reports them or not. (Documented & audio alerts driver to enhance driver safety and remind driver when the vehicle impacts items)

Quad Cam View, Dual Cam View & Single Camera Full Screen View, with & w/o Mapping available



! Stop Dangerous Fleet Driving Behavior !

Without Monthly Cellular Service Charges & Managed Solution Fees



American Bus Video Inc. (770) 263-8118

DriverSafetyCameras.com

FleetDriverRiskManagement.com

25 Years of Fleet Driver Safety System Sales & Service Experience

All Rights Reserved. © American Bus Video Inc. 2014