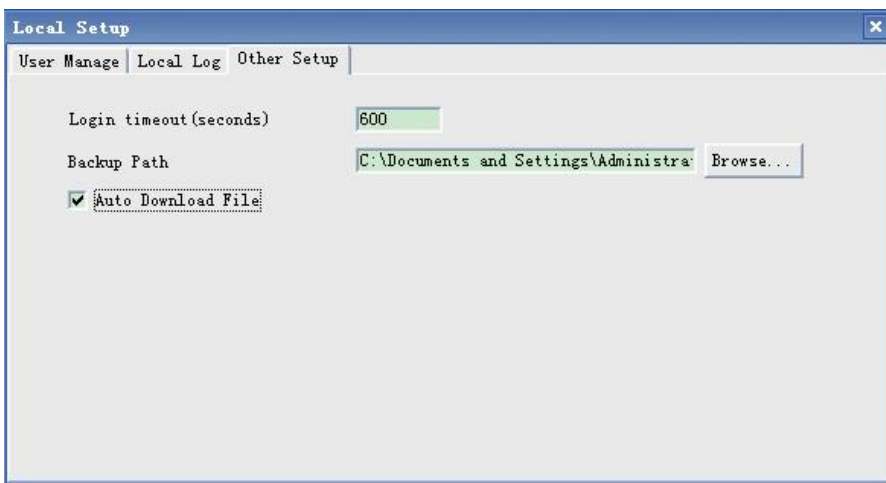


- 1) Use the client software to control the DVR:
 - a) Run MDR_Client_V2.07.exe to install the software. You will get three icons of “ViewPro”, “AVPlayer” and “Record Calculator” on your PC desktop. “ViewPro” is used for live view, file download, set DVR remotely, etc; “AVPlayer” is used for files playback.
 - b) Run the “ViewPro”. User Name or Password is not required, just press “Enter” to log in.
 - c) The software will refresh automatically and add new DVRs into the “DVR List”. If no DVR is found, please check the network connection and refresh the list manually. When a DVR is found, please double click to login in. By default, there is no password so you just click "Connect" to login to the DVR. You can see the live video by double click the "channel01" or other channels.
 - d) Right click the DVR and choose "setup", you can set the parameter of the DVR.
 - e) Click "Remote File List" and choose the date, you can see the file list on the SD card.
 - f) Choose the file and right click, you can download the file manually.
 - g) To download the file automatically, please choose the Menu “Setup”→”Local Setup” →”Other Setup”, Click “Auto Download File”:



- h) You can find the DVR in the “DVR List”, it will auto connect, and then auto download the record files. The default download path is “my document”.

