



<http://www.ubuntugeek.com/tools-to-access-linux-partitions-from-windows.html>

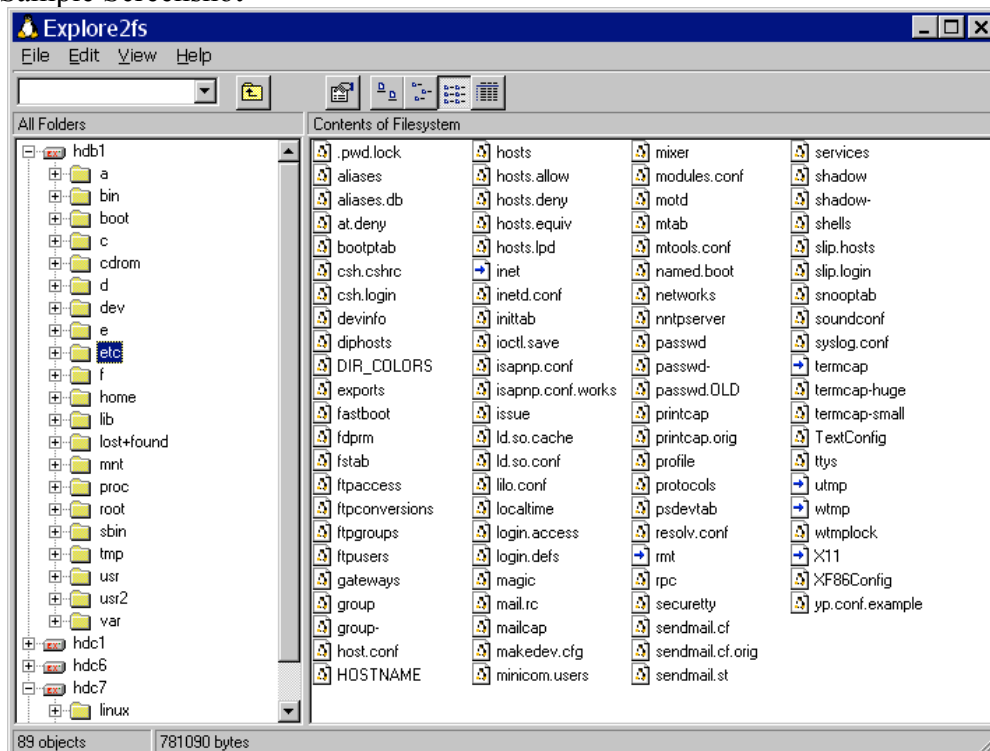
Tools to access Linux Partitions from Windows

Explore2fs

Explore2fs is a GUI explorer tool for accessing ext2 and ext3 filesystems. It runs under all versions of Windows and can read almost any ext2 and ext3 filesystem.

Project Home Page <http://www.chrysocome.net/explore2fs>

Sample Screenshot



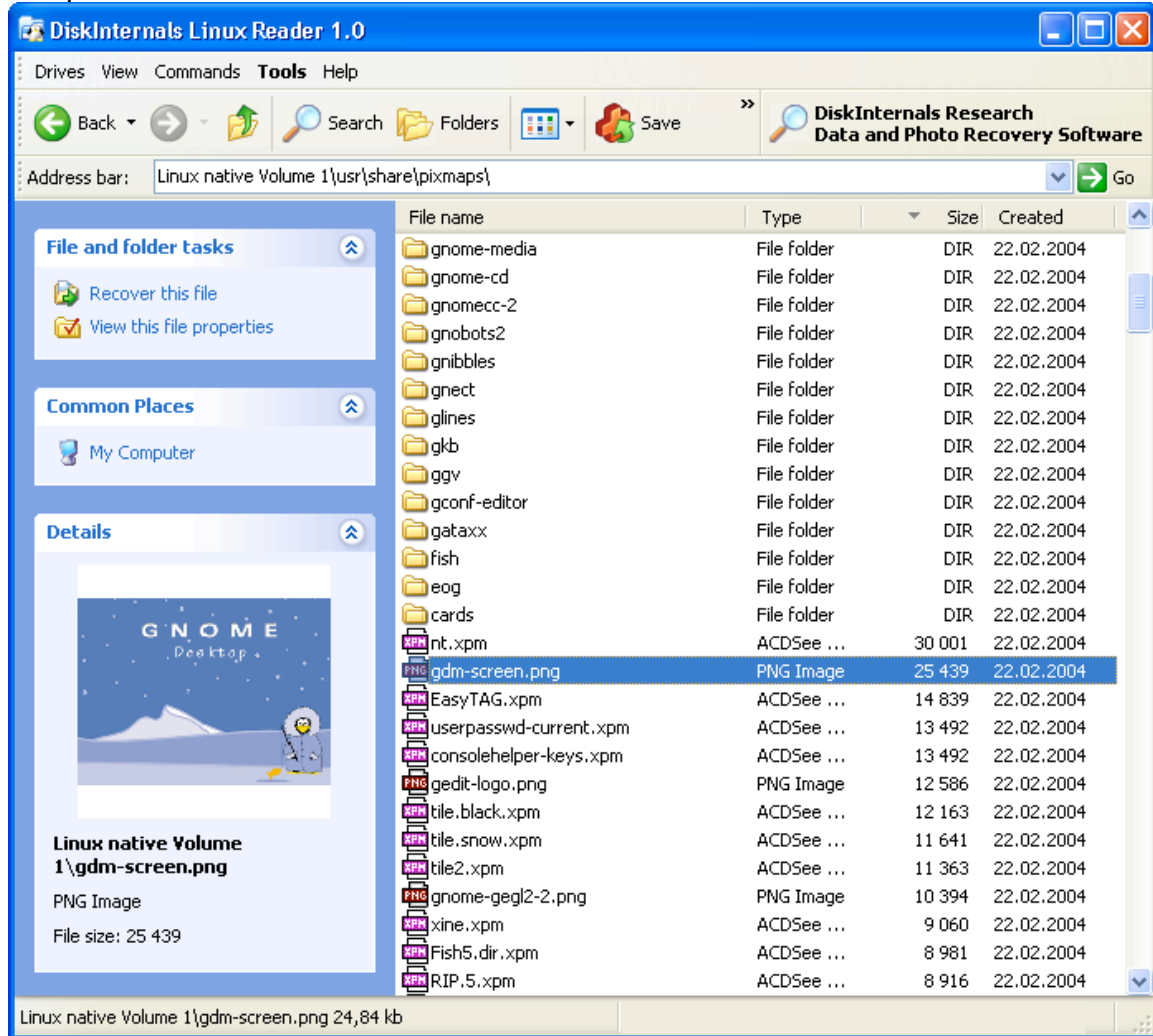
DiskInternals Linux Reader

DiskInternals Linux Reader is a new easy way to do this. This program plays the role of a bridge between your Windows and Ext2/Ext3 Linux file systems. This easy-to-use tool runs under Windows and allows you to browse Ext2/Ext3 Linux file systems and extract files from there.

Project Home Page :- <http://www.diskinternals.com/linux-reader/>

Latest Version :- 1.0

Sample Screenshot



Ext2 Installable File System for Windows

It provides Windows NT4.0/2000/XP/2003 with full access to Linux Ext2 volumes (read access and write access). This may be useful if you have installed both Windows and Linux as a dual boot environment on your computer.

Project Home Page : <http://www.fs-driver.org/>

Latest Version :- 1.10c

Sample Screenshot

