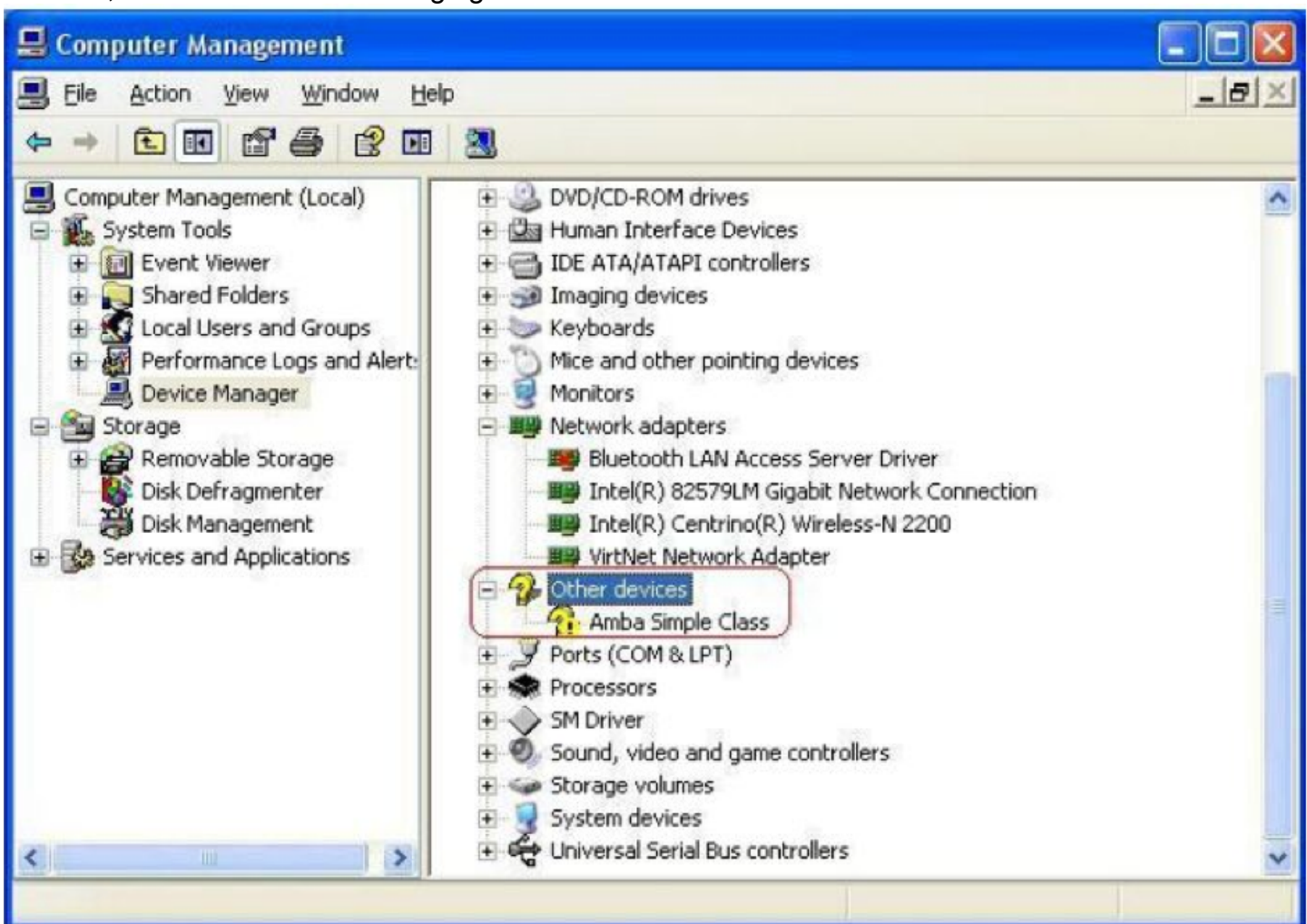


## Driver Body Camera DBC-Pro Driver Installation and Video Player Application Setup Instructions

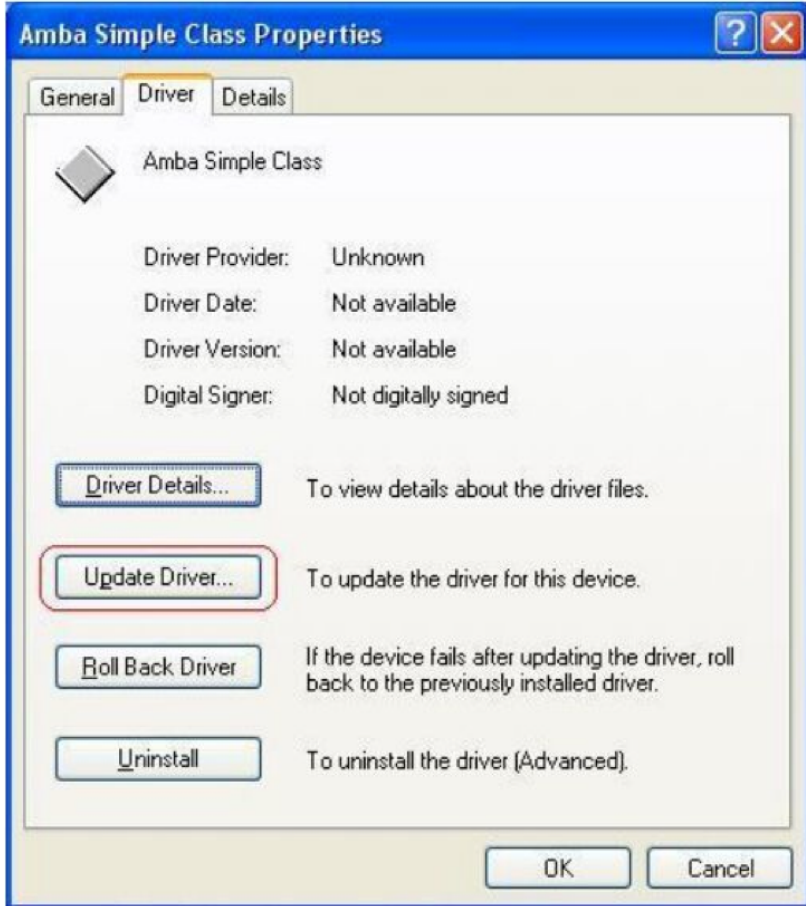
The connection between police law-enforcement video and audio recorder and the computer needs to be realized through professional management software. The support operating systems are Windows2000, Windows XP, Vista and Windows7. For the first connection between your law-enforcement recorder and the computer, when reading the data, you need to operate as follows:

Step 1:

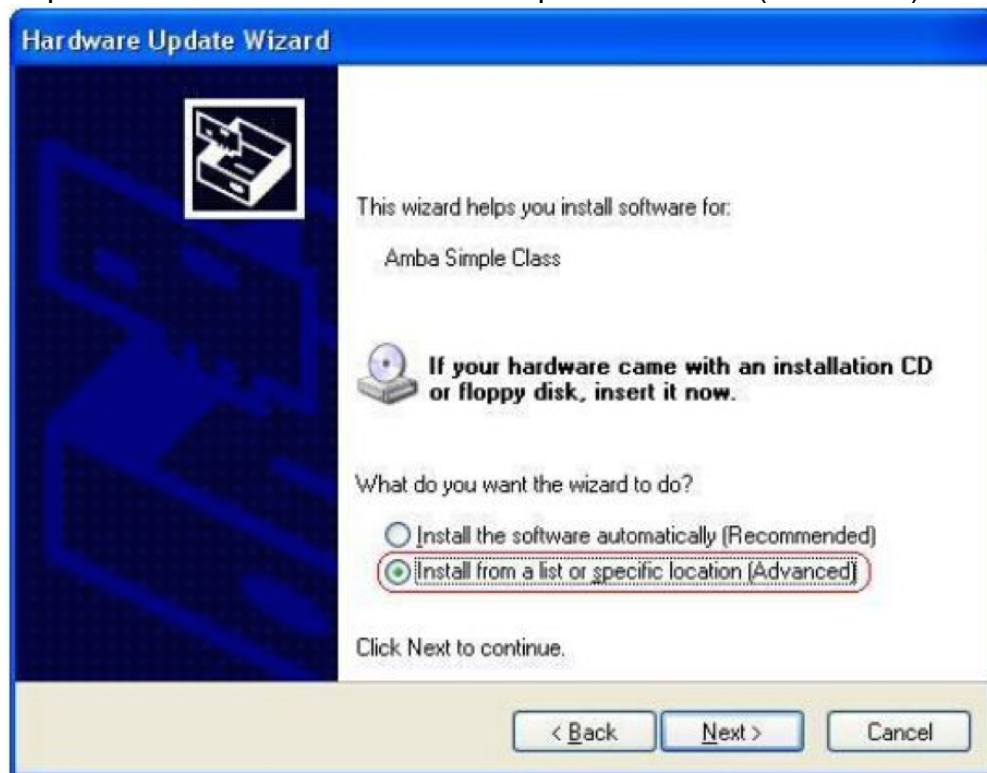
Copy the software and driver to computer and connect the law-enforcement recorder to computer. Open “Device Manager” in “My Computer” and select document with yellow question mark in “Other devices”, as shown in the following figure.



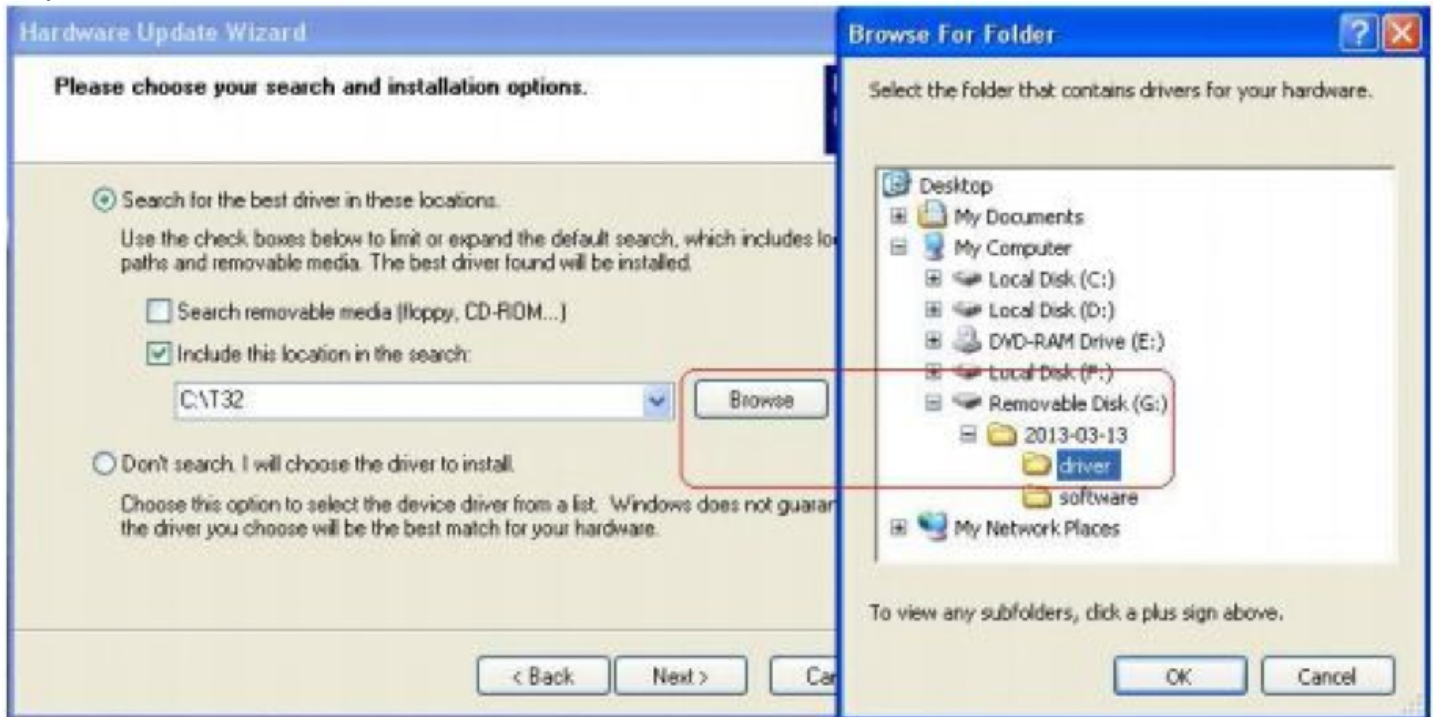
Step 2: double click to select the yellow question mark, the interface shown as follows, and then select upgrade the drive program.



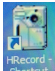
Step 3: Select "Install from the list or specific location (Advanced)" in the list, as shown below:



Step 4: Click “Next” and the screen is as shown below:



Step 5: Click “OK” after select the position of “Driver” folder in the optical disc file from Browse. Then the computer will complete the driver installation of law-enforcement recorder automatically.

Step 6: Log in, double click the shortcut , and the following interface will be shown: Input six-digit password correctly (initial password “000000”) and click “Connect the camera, log in”, enter into the interface as shown below:



Then, the following operations can be carried out:

- 1) Sync the time on the computer to the law-enforcement recorder;
- 2) Modify the login password of back-stage management software;
- 3) Set numbers. Click this button to set special numbering, such as the police ID, etc;
- 4) Enter and click the button for uploading files automatically, all files in the law-enforcement recorder will be copied to the specific folder.

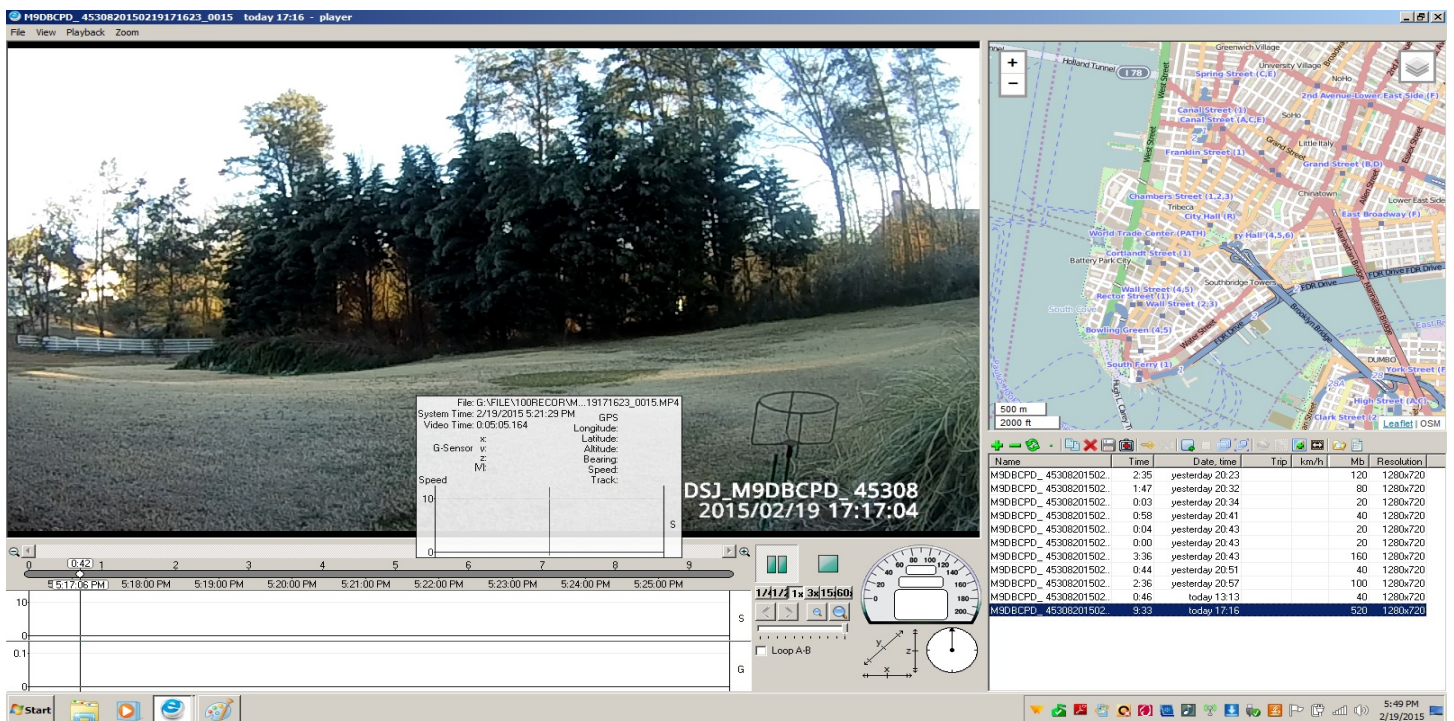
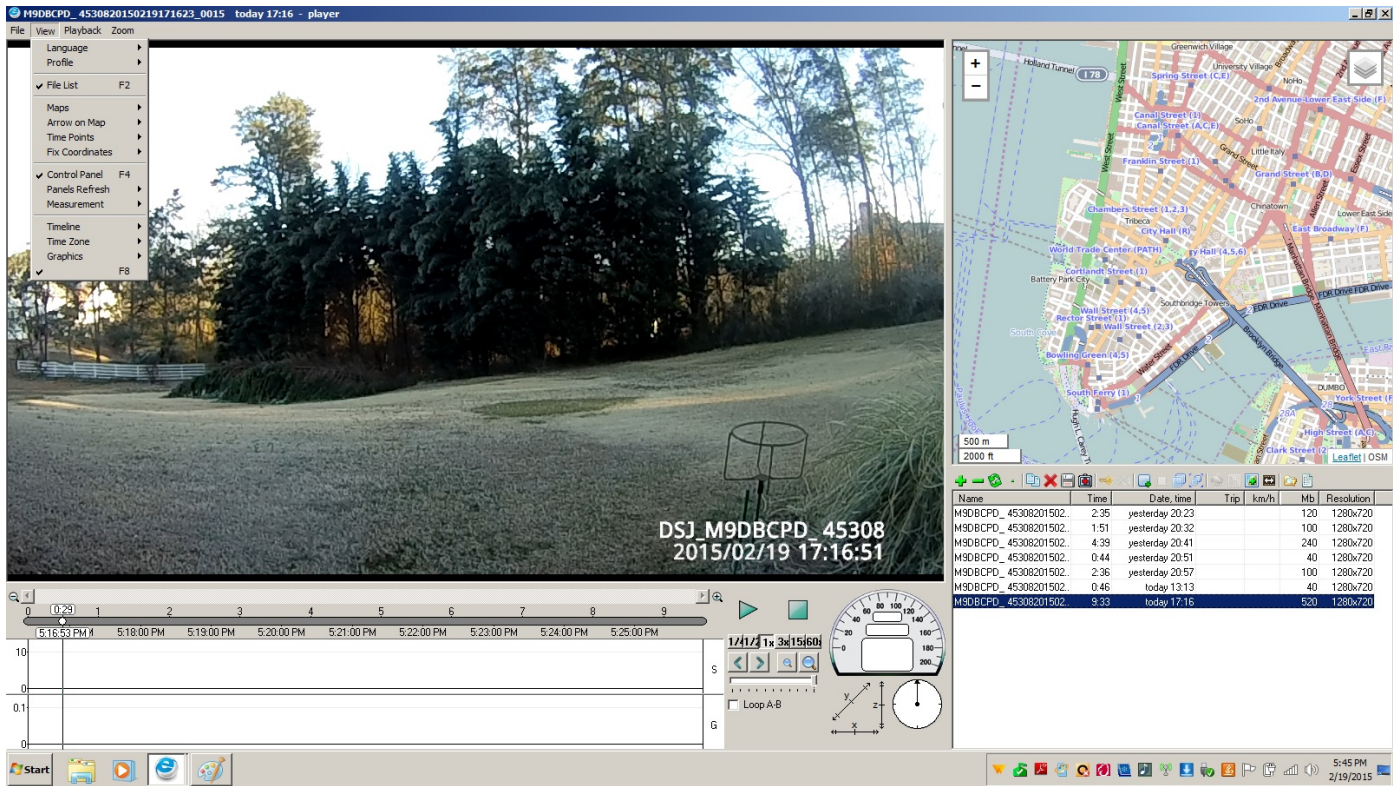


Step 7: Click “Enter into USB flash disk”, Button on left labeled “Enter U disk” and the operating system can identify law enforcement recorder as a removable disk at this time. Users can browse, copy or delete contents in the law-enforcement recorder.

Look For EPlayer video software Icon and double click to open application for Video Player.



Once you have opened the Video Player Program you should see a GUI similar to the below image:



## American Bus Video

[www.AmericanBusVideo.com](http://www.AmericanBusVideo.com) (770) 263-8118 [sales@AmericanBusVideo.com](mailto:sales@AmericanBusVideo.com)  
<http://www.driversafetycameras.com> <http://www.fleetdriverriskmanagement.com>

\*All DVR specifications, features, GUI, hardware subject to frequent change by the manufacturer without notice.

All Rights Reserved. © American Bus Video Inc. 2015